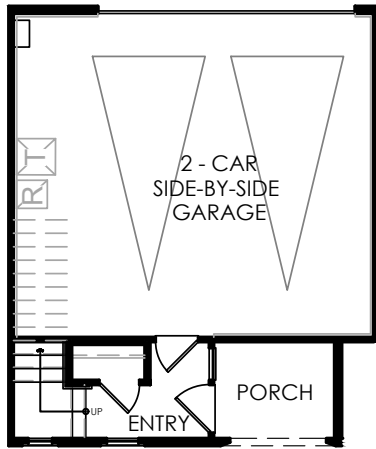
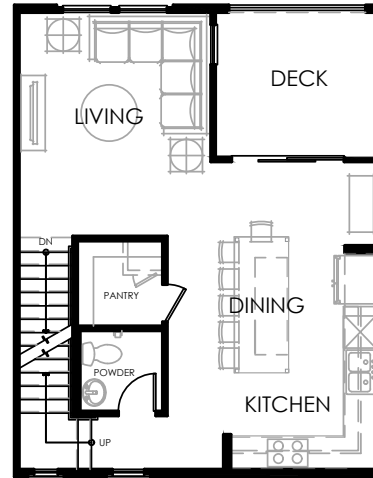




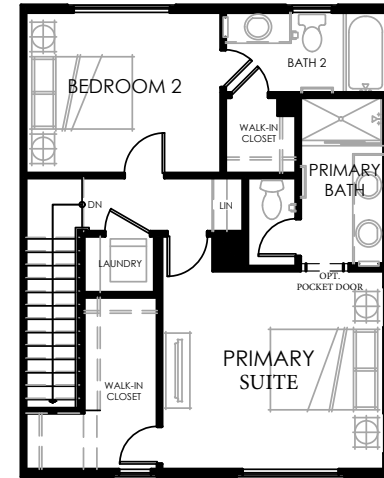
**PLAN 2, The Radiance**  
2 bedroom, 2.5 baths  
1,276 sq ft  
2 car side-by-side garage



1ST FLOOR



2ND FLOOR



3RD FLOOR

Lumina Walk by The Olson Company | 8448 Lumen Street #1, Rosemead CA 91770 | (562) 852-0127 | calvarado@theolsonco.com | LuminaWalk.com

The footprints above represent the first level of the residence only (garage level). Single-family detached homes are located within a condominium development and some living spaces are stacked over other residences. Floorplans and renderings are artist's conception based on preliminary information. Some homesites may be pre-plotted for specific variations or options. Please consult your Home Advisor for details. In an effort to improve our homes, Olson Homes reserves the right to change features, prices or plans without notice. Windows, doors, porches, patios and decks vary per elevation and per homesite location. Floorplan measurements are approximate. Prices and availability are subject to change without notice. DRE #01877641. CSLB #939166 Olson Urban Housing, L.P.

